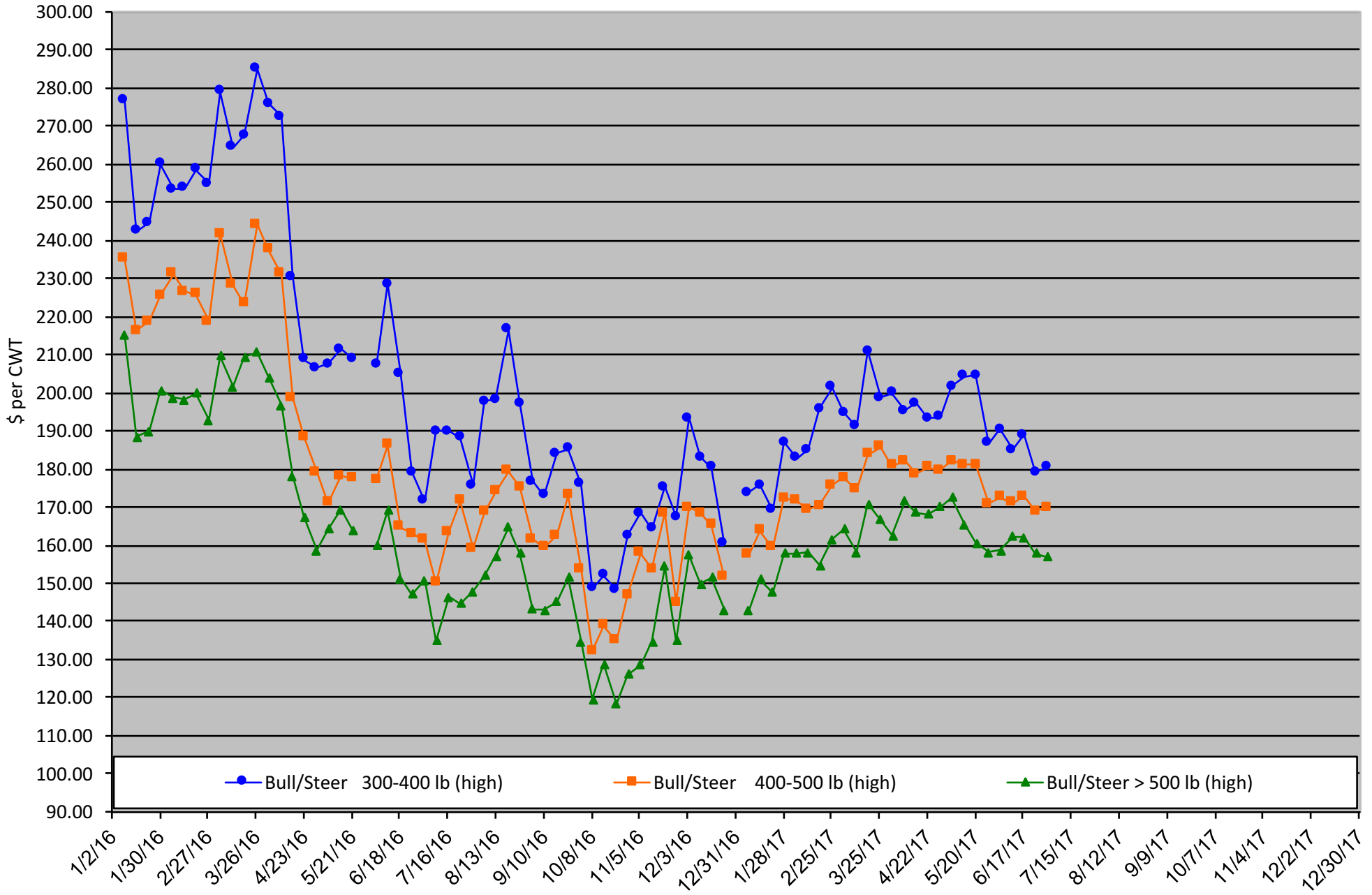


Calf Price Trends

Trend of Highest Prices Reported for Various Weight Calves, Average of 3 East Texas Livestock Auctions

For a weekly email copy of this chart please subscribe at <http://beeffax.tamu.edu> or contact a Texas A&M AgriLife County Extension Agent
Chart created by Dr. Jason Banta, Extension Beef Cattle Specialist

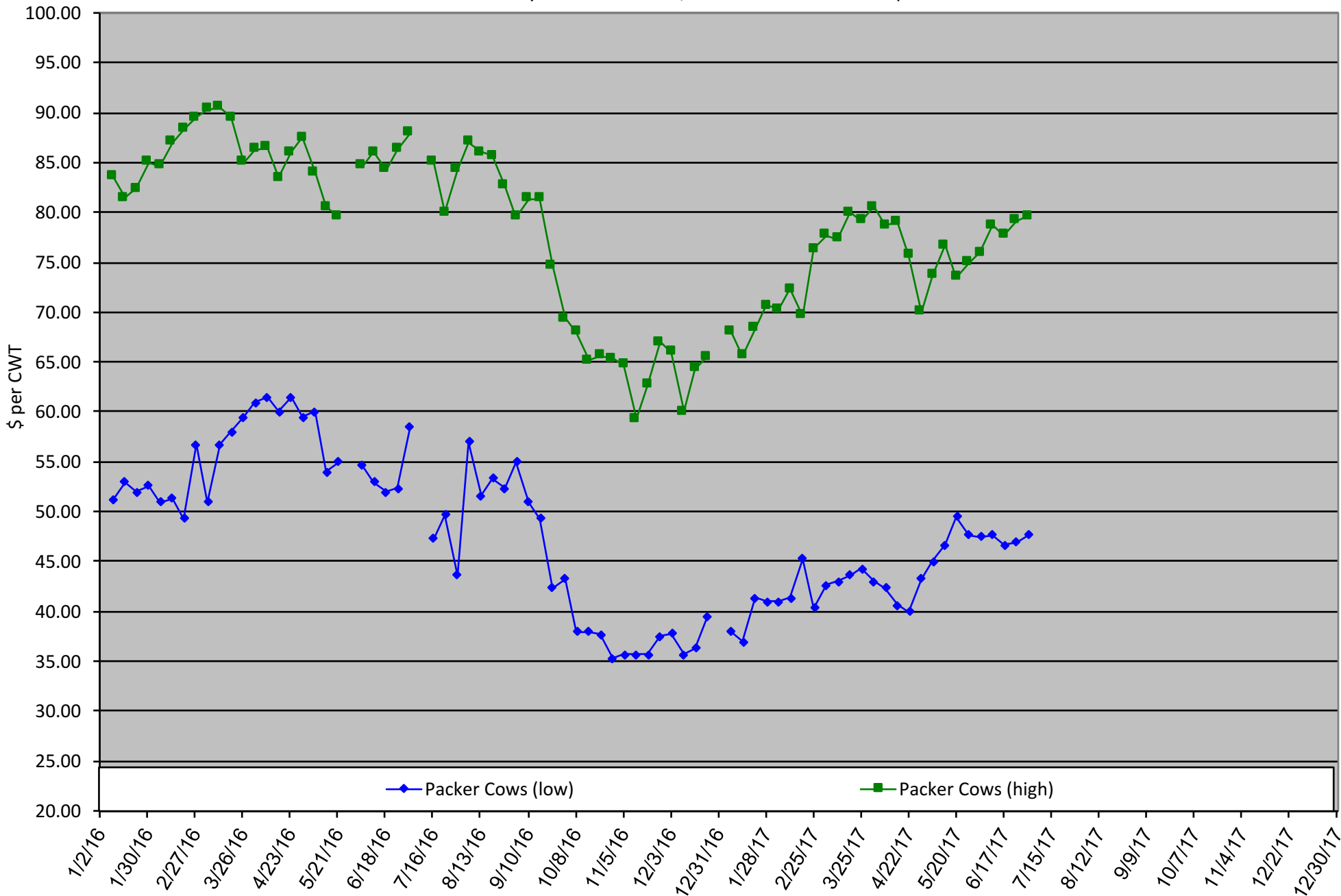


Packer Cow Price Trends

Trend of High and Low Prices Reported for Packer Cows, Average of 3 East Texas Livestock Auctions

For a weekly email copy of this chart please subscribe at <http://beeffax.tamu.edu> or contact a Texas A&M AgriLife County Extension Agent

Chart created by Dr. Jason Banta, Extension Beef Cattle Specialist



BEEF QUALITY ASSURANCE TRAINING

TEXAS A&M
AGRI LIFE
EXTENSION

BEEF



UPCOMING EVENTS

JULY 20, 2017

GAINESVILLE, TEXAS - LANDMARK BANK CENTER

JULY 21, 2017

CLARKSVILLE, TEXAS - MCKENZIE MEMORIAL UNITED METHODIST CHURCH

AUGUST 1, 2017

LAREDO, TEXAS - IBC ANNEX BALLROOM

AUGUST 3, 2017

ODESSA, TEXAS - ECTOR COUNTY COLISEUM

OCTOBER 28, 2017

WAXAHACHIE, TEXAS - ELLIS COUNTY EXPO CENTER

SPONSORED BY:



Boehringer
Ingelheim

For more information visit www.texasbeefquality.com

Reduce Winter Feeding with Stockpiled Forage and Winter Pasture

Thursday, August 24, 2017

Texas A&M AgriLife Research and Extension Center
1710 N. Hwy 3053, Overton, TX 75684

**Would you prefer to feed hay for 60 days? 100 days?
or 150 days?**

**Here's an opportunity to learn how to significantly
reduce your hay feeding needs.**

Program presented by:
Drs. Vanessa Corriher-Olson and Jason Banta



Topics include:

- Stockpiled forage: management and utilization
- How many acres do you need of stockpiled forage and winter pasture?
- Cool-season forages and variety selection
- Establishment and fertilization
- Monthly and seasonal forage production potential
- Appropriate mineral supplementation
- Estimated costs

9:30 Registration starts
10:00 Program starts
12:00 Lunch served
5:00 Adjourn

Register before August 13th: \$60/ person
Register before August 22nd: \$75/person
Money back guarantee
(Includes lunch and program materials)

Register online at: <https://agriliferegister.tamu.edu>;
or call Extension Conference Services @ 979-845-2604

2 Pesticide CEUs Available (1 IPM and 1 general)

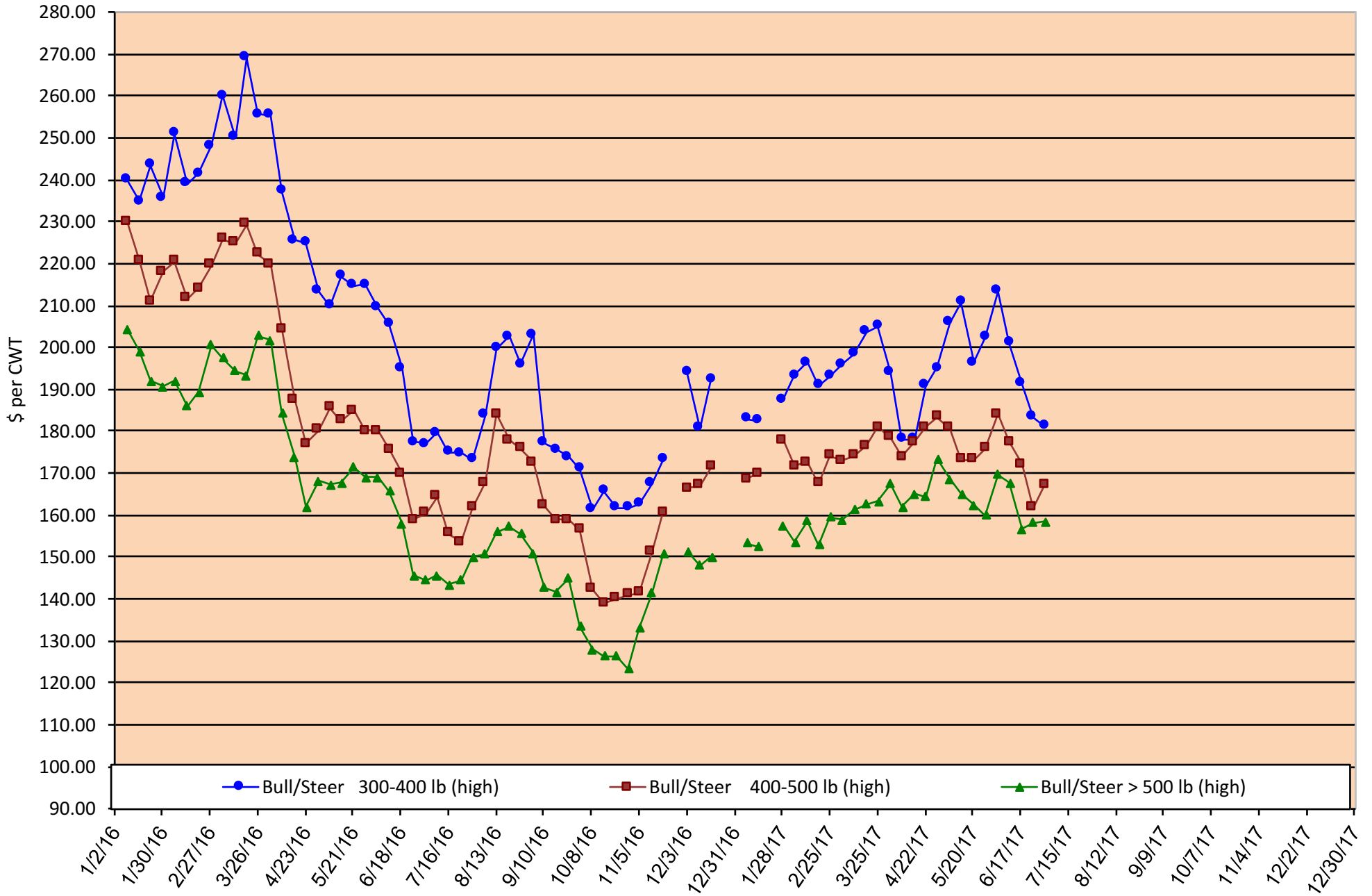
For more information on this program please contact
Michelle Sensing @ 903-834-6191.

Calf Price Trends

Trend of **Highest** Prices Reported for Various Weight Calves, Average of 3 Central Texas Livestock Auctions

For a weekly email copy of this chart please subscribe at <http://beefax.tamu.edu> or contact a Texas A&M AgriLife County Extension Agent

Chart created by Dr. Jason Banta, Extension Beef Cattle Specialist



Packer Cow Price Trends

Trend of High and Low Prices Reported for Packer Cows, Average of 3 Central Texas Livestock Auctions

For a weekly email copy of this chart please subscribe at <http://beefax.tamu.edu> or contact a Texas A&M AgriLife County Extension Agent

Chart created by Dr. Jason Banta, Extension Beef Cattle Specialist

