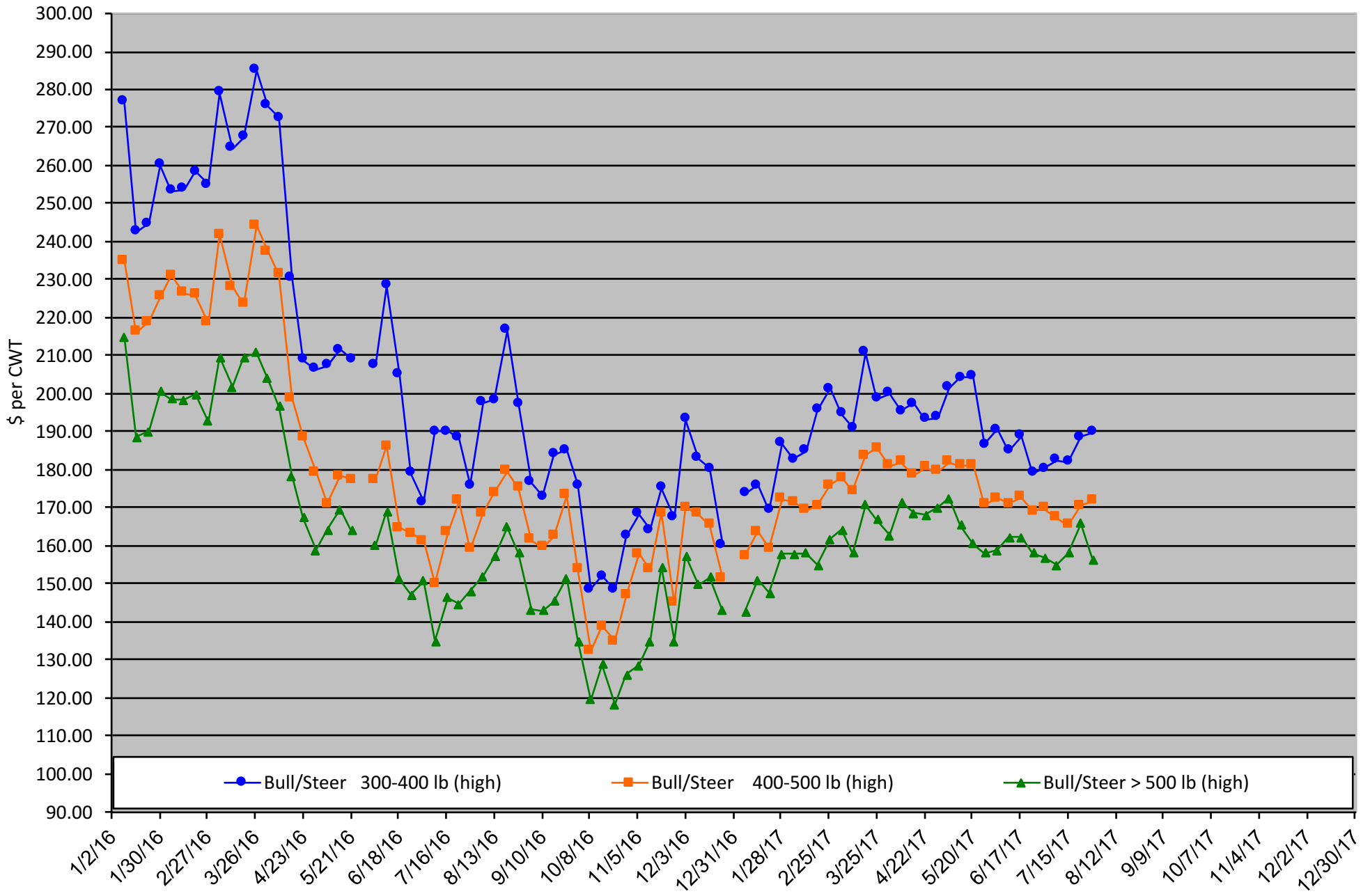


# Calf Price Trends

Trend of Highest Prices Reported for Various Weight Calves, Average of 3 East Texas Livestock Auctions

For a weekly email copy of this chart please subscribe at <http://beeffax.tamu.edu> or contact a Texas A&M AgriLife County Extension Agent  
Chart created by Dr. Jason Banta, Extension Beef Cattle Specialist

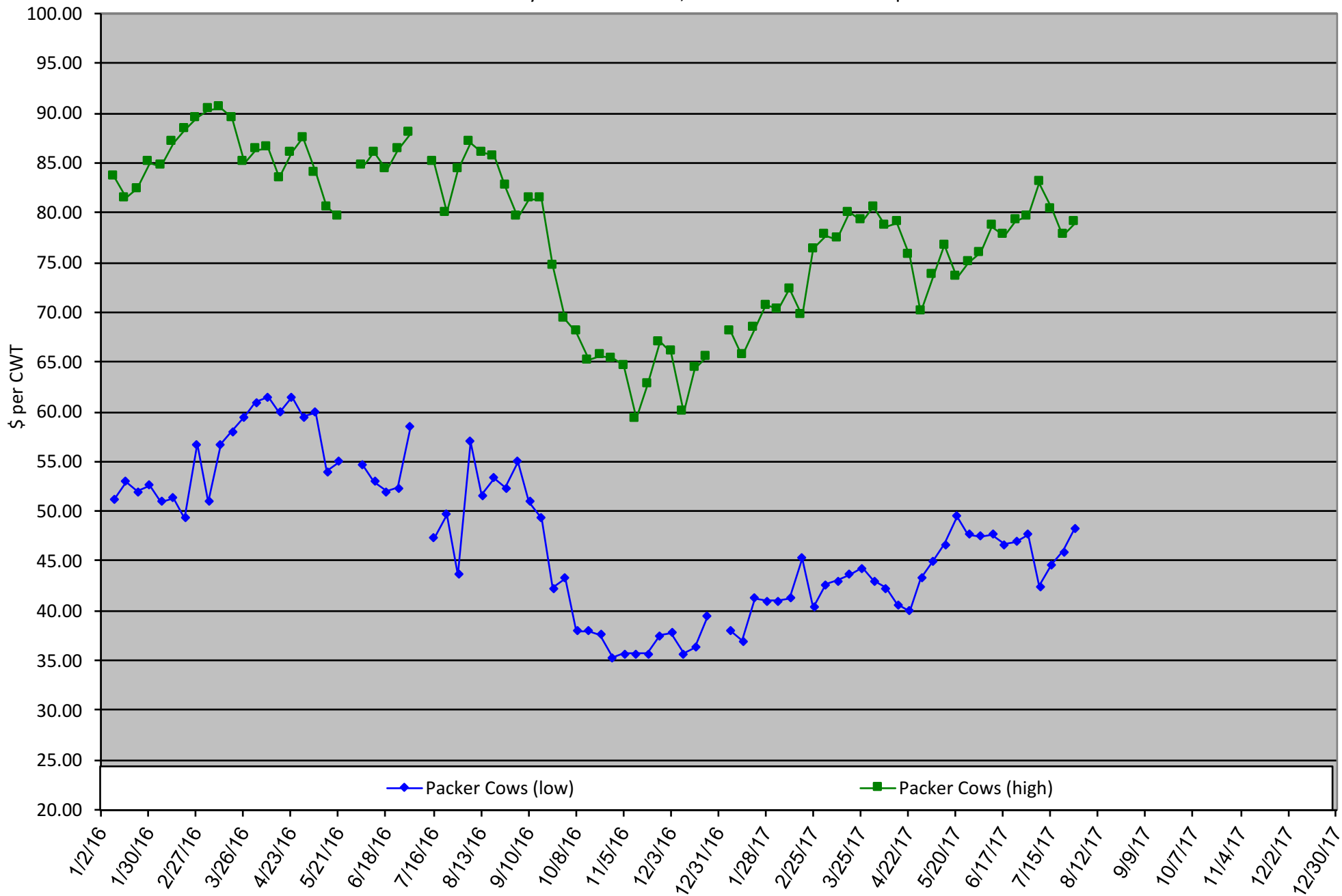


# Packer Cow Price Trends

Trend of High and Low Prices Reported for Packer Cows, Average of 3 East Texas Livestock Auctions

For a weekly email copy of this chart please subscribe at <http://beeffax.tamu.edu> or contact a Texas A&M AgriLife County Extension Agent

Chart created by Dr. Jason Banta, Extension Beef Cattle Specialist



# Reduce Winter Feeding with Stockpiled Forage and Winter Pasture

**Thursday, August 24, 2017**

Texas A&M AgriLife Research and Extension Center  
1710 N. Hwy 3053, Overton, TX 75684

**Would you prefer to feed hay for 60 days? 100 days?  
or 150 days?**

**Here's an opportunity to learn how to significantly  
reduce your hay feeding needs.**

Program presented by:  
Drs. Vanessa Corriher-Olson and Jason Banta



Topics include:

- Stockpiled forage: management and utilization
- How many acres do you need of stockpiled forage and winter pasture?
- Cool-season forages and variety selection
- Establishment and fertilization
- Monthly and seasonal forage production potential
- Appropriate mineral supplementation
- Estimated costs

**9:30 Registration starts**  
**10:00 Program starts**  
**12:00 Lunch served**  
**5:00 Adjourn**

**Register before August 13th: \$60/ person**  
Register before August 22nd: \$75/person  
Money back guarantee  
(Includes lunch and program materials)

**Register online at: <https://agriliferegister.tamu.edu>;**  
or call Extension Conference Services @ 979-845-2604

*2 Pesticide CEUs Available (1 IPM and 1 general)*

For more information on this program please contact  
Michelle Sensing @ 903-834-6191.

# BEEF QUALITY ASSURANCE TRAINING

TEXAS A&M  
AGRI LIFE  
EXTENSION

BEEF



## UPCOMING EVENTS

**JULY 20, 2017**

GAINESVILLE, TEXAS - LANDMARK BANK CENTER

**JULY 21, 2017**

CLARKSVILLE, TEXAS - MCKENZIE MEMORIAL UNITED METHODIST CHURCH

**AUGUST 1, 2017**

LAREDO, TEXAS - IBC ANNEX BALLROOM

**AUGUST 3, 2017**

ODESSA, TEXAS - ECTOR COUNTY COLISEUM

**OCTOBER 28, 2017**

WAXAHACHIE, TEXAS - ELLIS COUNTY EXPO CENTER

SPONSORED BY:



Boehringer  
Ingelheim

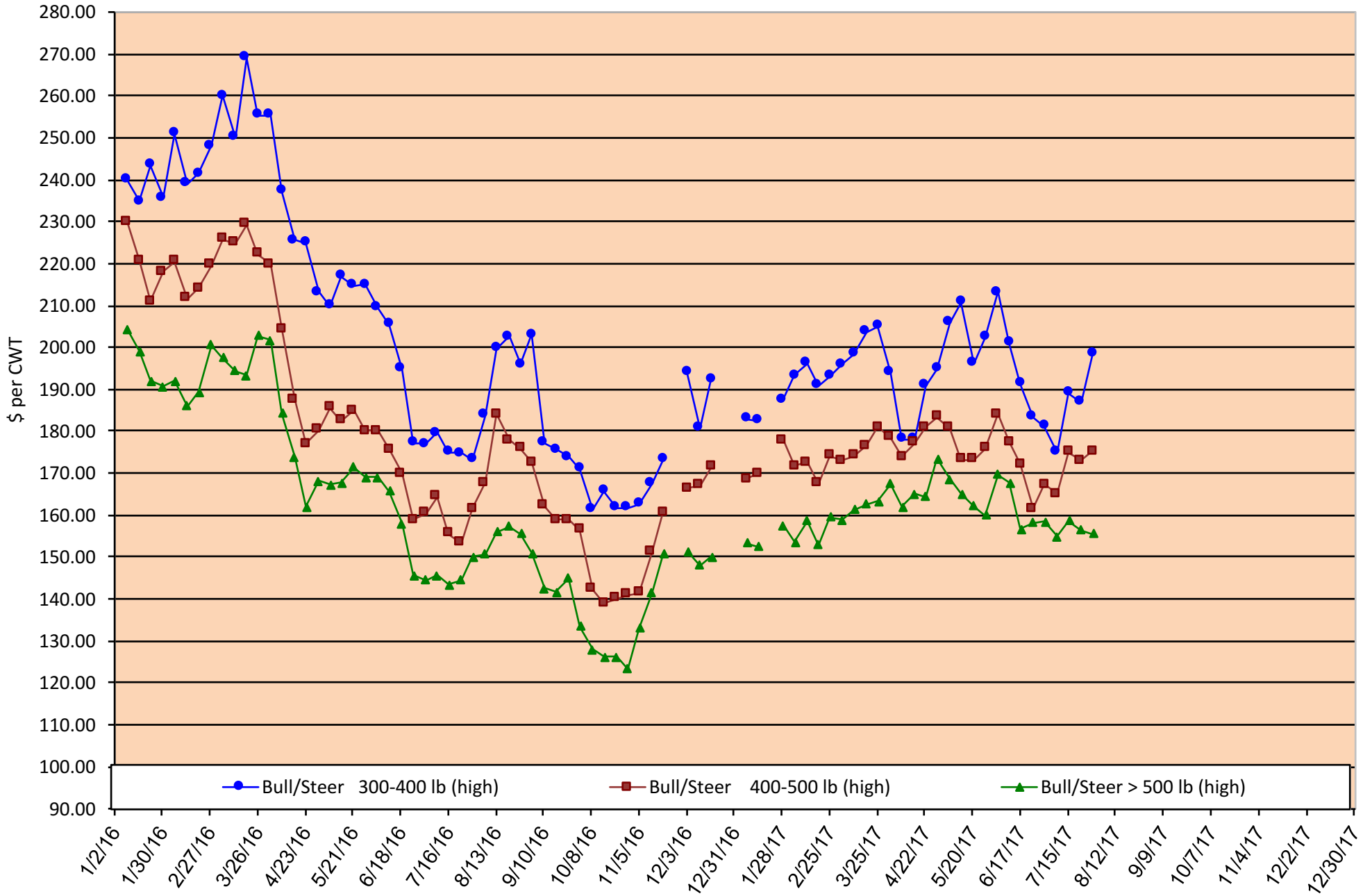
For more information visit [www.texasbeefquality.com](http://www.texasbeefquality.com)

# Calf Price Trends

Trend of **Highest** Prices Reported for Various Weight Calves, Average of 3 Central Texas Livestock Auctions

For a weekly email copy of this chart please subscribe at <http://beefax.tamu.edu> or contact a Texas A&M AgriLife County Extension Agent

Chart created by Dr. Jason Banta, Extension Beef Cattle Specialist



# Packer Cow Price Trends

Trend of High and Low Prices Reported for Packer Cows, Average of 3 Central Texas Livestock Auctions

For a weekly email copy of this chart please subscribe at <http://beef.tamu.edu> or contact a Texas A&M AgriLife County Extension Agent

Chart created by Dr. Jason Banta, Extension Beef Cattle Specialist

